

PRODUCT

# ML-1600 Seating Riser

ITEM

Product Sheet

CATEGORY

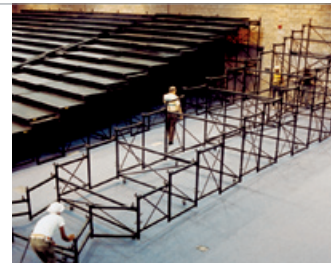
Major Events & Staging



## Maximum seating capacity and minimize labor with this easy-to-use portable riser.

Versatility, flexibility, and reliability combine to make the ML-1600 Seating Riser the first choice of theater and facility managers around the world. You can seat your spectators in one of several possible configurations using the same components, maximizing seating capacity for each event. Risers contoured to hockey dashers or straddling pillars

allow you to increase your seating capacity in difficult areas. Plus, the one piece folding support assembly slashes hours off setup time. Just roll it into place and unfold it. The combination of our resonance-absorbing decks and the sturdy ML-1600 understructure helps spectators feel like they are on permanent risers.



→ Accordion folds facilitate quick setup and compact storage of the ML-1600 seating riser.



Set up in minutes



Sturdy, with no tools required



Unsurpassed customer service



**STAGERIGHT**

TOLL FREE 800.438.4499

ONLINE [www.stageright.com](http://www.stageright.com)

# ML-1600 Seating Riser

## Features and Benefits

### One-Piece, Folding Support Assembly

- Save setup time by simply rolling the multi-level assembly into position and unfolding it in place.
- Save storage space: an 18-level riser is 54' extended but only 5 1/2' stored.
- Maximize seating capacity with sections contoured to facility structures such as hockey dashers and pillars.
- Rely on consistent operation because the few moving parts seldom incur maintenance.
- Eliminate time spent looking for parts or tools.

### Modular Design

- Configure seating to best suit the event.
- Drop off or add levels in front or back.
- Build to unlimited width overall.

### Decks Bridge Between Support Assemblies

- Save time with fewer supports to set up and tear down.
- Greatly reduce leveling time because fewer elements contact the floor and the open area allows easy access.
- Minimize your initial investment because fewer supports are required.
- Reduce your storage space requirements because fewer supports are required.

### Locator Nodes

- Save time as the decks self-align quickly and easily, fastening without tools, clamps or clips.
- Save time because, in a single step, placing the decks also aligns and connects the riser bays (sections).

### Adjustable Screw Feet

- Compensate for uneven floors with 3" of easy, fine-adjustment leveling.
- Save maintenance costs because tough, 3/4" Acme-thread screw resists damage (compared to typical "V" threads).
- Protect floor surfaces with sure-grip 2 1/4" diameter urethane pads.

### Nylon Bearings

- Unfold and fold the support assembly smoothly and quietly.
- Reduce maintenance by eliminating metal-on-metal wear.

### Ball-bearing Casters

- Reduce setup effort by rolling the support assembly to and from storage and during extension and closure.
- Move system assembled (if desired).
- Eliminate movement while in use: the casters retract after the system is positioned, allowing the screw feet to contact the floor and carry the load.
- Non-marring 5" diameter polyurethane casters with 900 pound load rating.

### Performance

- Certified live load capacity of 125 pounds per square foot.
- Certified sway load of 300 pounds per level.

### Performance

- Made under one or more of the following US patents: #4,638,604; #4,845,915; #4,843,792; #5,050,353.

## Technical Specifications

**Function** Seating Riser support system shall be moveable and meet the multi-level seating and/or performance requirements of arenas, convention centers and other facilities.

**Bridging** Alternating sections (bays) of seating riser shall be composed of decks that suspend, or bridge, between parallel, unconnected support assemblies, and shall self-align with no separate clamping or connecting processes.

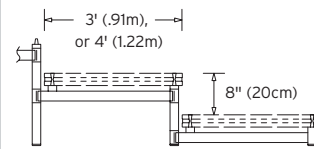
**Storage** A typical support assembly shall fold compactly in 10 to 15% of its overall depth (for example, an 18 level riser shall fold from 54' setup to 5 1/2' in stored configuration). There are instances where lower level risers have a "box" section at the back and this will prevent the system from folding up so compactly.

**Setup** No components requiring manual lifting shall weigh more than 130 pounds. System shall require no more than two persons for setup and take-down. Setup shall be accomplished by rolling the assembly on its own casters to the setup location, extending the lower levels away from the uppermost level, and rotating the casters away from the floor so that the main columns of the fully extended support section rest on the floor. Decks and accessories shall then be connected (assemblies without casters shall have other means of transport). Locator Nodes shall guide the decks into location and proper alignment, fastening them in place without tools, clamps or clips. Casters, an integral part of the system, shall facilitate its extension, closure and transport (systems having six or more levels).

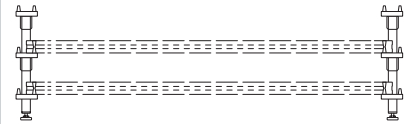
**Construction** Support members shall be fabricated from steel tubing. The support system shall be an accordion-fold type and shall be fully self-contained with no loose parts. All pivot points on the support system shall have self-lubricating nylon bushings to prevent any metal-to-metal contact between the inner and outer columns. Main columns shall be 2" diameter steel tubing. The support system shall be finished with a non-glare baked on black polyester powder coat. Support systems having 6 levels or more shall be equipped with non-marring 5" diameter by 1 1/4" wide mold-on polyurethane casters, each having a 900 pound load rating. Systems involving fewer than 6 levels shall not require casters. Leveling of each section shall be accomplished by 2 1/4" diameter screw feet with 3" adjustment capacity.

**Options** Available from two to 18 levels. Available with constant or multiple rises, including hyperbolic curved profiles. Decks bridging between two support assemblies are available in any width not less than one foot and not greater than eight feet. Pie-shaped decks are available to meet custom configurations.

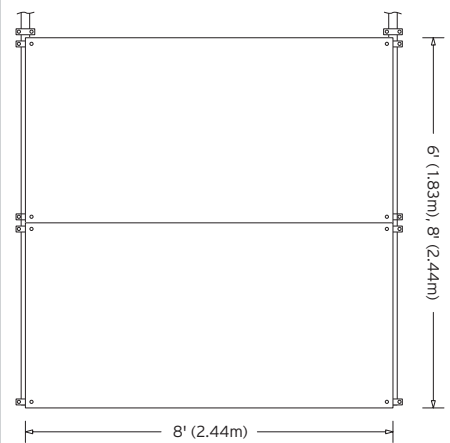
### End View



### Side View



### Top View



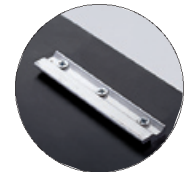
### Supplementary Parts

Horizontal braces shall be made of 2" square 14 gauge steel tubing. Side and back rails shall attach without tools. Side rails shall be 36" high, back rails shall be 42" high, and all rails shall pass the 4" sphere requirement.

Hardclosure panels shall be made of 5/8" plywood finished with a textured urethane resin coating, attach without tools, and effectively function as both a chair stop and trash guard.



Guardrails

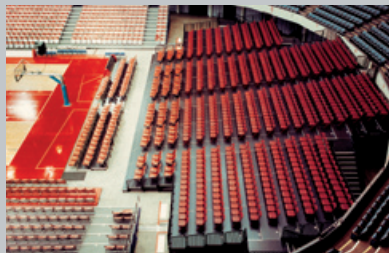


Hardclosure Panel

## \*Ordering Information

### ML-1600 Seating Riser

Please call for information on ordering the optimum riser for your facility.



→ The ML-1600 Seating Riser in the Los Angeles Sports Arena

\*Custom sizes are available upon request



STAGERIGHT